



Passenger Car and Light Truck Tyres



WWW.SAILUNTYRE.EU

SAILUN INTRODUCTION

Sailun Tyres have built up an enviable reputation throughout the world as the manufacturer and provider of high quality, great value premium economy tyres. Covering a number of applications, Sailun manufactures research-led tyre patterns for every type of day-to-day use.

Sailun was established in 2002 in the National Economic and Technological Development Zone in Qingdao, China. Now, Sailun is capable of producing 41.6 million PCR tyres, 7.3 million TBR tyres, and 33k tons of OTR tyres and sells them in over 50 countries worldwide. From the outset, the Sailun tyre company has combined technical expertise with innovative research and development to design and manufacture world-class tyres for all types of vehicles.

It selects only world-class partners and recognised leaders in their specific technological and rubber industry specialisation. Sailun's growth is attributable to its commitment to three core values – quality product, service you can trust and lifetime support.

SAILUN WORLDWIDE

Sailun has five factories, four located in the northern part of mainland China and one located in Vietnam. Via a corporate warehousing facility, Sailun distributes its tyres globally through a precisely-appointed professional network of tyre distributors.

Sailun works closely with every single distributor to ensure that the local Sailun opportunity is maximised in the most relevant and appropriate fashion – Think Global, Act Local. To this effect, we have established local sales reps and offices in the United States (Miami), Africa (Algeria and Nigeria), Europe (Birmingham), and Australia (Brisbane), as well as developed an R&D centre at the Sailun Europe office. Building on the strong foundations of real-world testing, Sailun will continue to develop the most advanced and cost-efficient platform for tyre manufacturing and distribution - while utilising its information technology and substantial research resources to help establish new tyre patterns.

RESEARCH AND DEVELOPMENT

Sailun has made great progress in the tyre industry despite its short history. Sailun currently invests over 30% of its resources in research and development. In 2009, Sailun, together with the Qingdao University of Science and Technology, were nominated to develop a National Tyre Process and Control Engineering Technology Research Centre to develop and build the optimal platform to promote and enhance tyre technology.

The Centre studies and resolves key technical issues in the tyre manufacturing process. The vision of the Centre is to move the tyre industry forward through the quest for improved technology and the production of higher quality products. Sailun is the first tyre manufacturer to integrate production, research, and product demonstration into the development of new products. The Centre now employs over 300 technical specialists.

Sailun's computerised tyre production and manufacturing processes - in conjunction with management techniques and network control systems - allows it to effectively monitor quality control, resource management, marketing, administration and logistics. In addition, Sailun uses advance information technology to help track the data of each tyre produced, and to benchmark the Sailun tyre quality against other leading international standards of quality and design. Sailun collaborates closely with academic institutions to develop and improve formulation techniques, tyre structure, tyre testing methods, and information technology.

Sailun is accredited internationally and certified to meet the most stringent quality standards and the highest levels of quality assurance. Sailun is proud to have received the Parent Tested Parent Approved (PTPA) Seal of Approval for its Sailun Atrezzo and Ice Blazer tyre line ups. PTPA is North America's largest volunteer parent testing community, with over 50,000 parents. The PTPA Winner's Seal is evidence of a product's excellence from having been evaluated by unbiased parent testers.

MISSION STATEMENT

To serve global communities by providing the best quality products, and creating value for our stakeholders through our team, our partners, and our customers- all while driving continuous improvement, respect for the environment, and the establishment of trust in everything we do.

SAILUN-WCC PARTNERSHIP

Sailun Tyres is proud to be partners with the World Child Cancer charity (WCC), an organisation dedicated to the treatment of children with cancer in developing countries.

The inequality of diagnosing and treating children diagnosed with cancer between high and middle/low income countries is astounding. 200,000 children develop cancer worldwide each year with 80% of those children being located in low or middle income countries with only a 5% survival rate, compared to the 80% in high income countries. These low survival rates are attributed to shortage of specifically trained doctors and nurses, poor diagnosis and mistaken belief that child cancer is too difficult to cure. The work that WCC does is to treat children with cancer in the areas where treatments are not easily available or affordable.

WCC's mission is to bring greater awareness to cancer, cancer diagnosis, treatment and palliative care. Their vision is to raise survival rates to between 50-60% by treating children with relatively simple protocols and inexpensive drugs. Projects such as Malawi, started in 2009, are already seeing such progress. They fund international twinning partnerships which link experienced pediatric oncologists, nurses and healthcare workers from world renowned child cancer units in developed countries to projects in South America, Cameroon, Malawi, Ghana, Bangladesh, Philippines and Myanmar.

In 2014 alone, WCC trained 850 healthcare workers, funded nine projects in 16 different countries and set up a new project, Wilms' Tumour Collaboration across six African countries. They also opened a new project in Myanmar after a successful partnership with the Financial Times and received their first government funding projects in Ghana and Bangladesh.



"We are small but ambitious and, with Sailun's help, we will be able to achieve our plans for 2016 and beyond. These plans include extending our project in the Philippines by creating more satellite centres; expanding our newest project in Myanmar; and continuing to work with the Department of International Development to invest further in our Ghana and Bangladesh projects.

We are extremely grateful for this support from Sailun and its network, and look forward to working with you this year to improve the chances of survival for children with cancer in the developing world."

<http://www.worldchildcancer.org>



CONTENTS

TYRE LABELLING	4
QUALITY, TRUST & SUPPORT	5
HIGH PERFORMANCE	
ATREZZO ECO	6-7
ATREZZO ELITE	8-9
ATREZZO Z4+AS	10-11
ATREZZO ZSR	12-13
ATREZZO 4SEASONS	14-15
SUV	
TERRAMAX CVR	16-17
ATREZZO SVR LX	18-19
TERRAMAX HT	20
TERRAMAX AT	21
LIGHT TRUCK	
SL 12	22
COMMERCIO VX1	23
WINTER	
ICEBLAZER WSL2	24-25
ICEBLAZER WST1	26-27
ICEBLAZER WST2 LT	28-29
ENVIRONMENTALLY-FRIENDLY TECHNOLOGY	
PTPA	31

KEY

PR = Ply Rating
 LI / SR = Load Index / Speed Rating
 SW = Section Width (mm)
 OD = Overall Diameter (mm)
 Std Rim = Standard Rim
 Max Load = Maximum Rated Load (kg@kPa)
 UTQG = Uniform Tyre Quality Grading
 F = Fuel Efficiency
 WG = Wet Grip
 NG Db = Noise Rating (decibels)
 NG = Noise Grade
 RR = Rolling Resistance

TYRE LABELLING

In order to provide standardised information on fuel efficiency, wet grip and external rolling noise, in November 2012 the European Union introduced a compulsory label for all new tyres.

The label is intended to give end-users some essential information to help them when choosing new tyres. Manufacturers of tyres for cars, light and heavy trucks must specify rolling resistance (represented by Fuel Efficiency), wet grip and noise classification of every tyre sold in the EU.

This information is incorporated within the technical specifications of each pattern within this brochure and will be visible on a label placed on the tyre tread. The tyre dealer must ensure that tyres which are visible to the consumer at the point of sale carry a label – the information should also be supplied with the sales invoice.

This initiative stems from the release of the 2009 Energy Efficiency Action Plan by the EU Commission, designed to improve the energy performance of products, buildings and services. The ultimate goal is to reduce energy consumption by 2020 by 20%.



QUALITY

TRUST



SUPPORT

QUALITY, TRUST & SUPPORT

Sailun is built on 3 Core Values: Quality, Trust & Support. Quality is paramount in every function & every level. It is born in our products, but lives in the people who work here. Trust is earned through our commitment to our long term goals and an understanding of our customers. Support for those we work with, before, during and after any interaction we as a company have be it sales or other.

Sailun supports our distributor partners, their dealer networks and the end user (vehicle driver) with a number of initiatives:

- Technical Support and Training
- Brand Awareness and Appreciation
- Tyre Testing Days
- Brand Guidelines
- Show and Event Support



ATREZZO

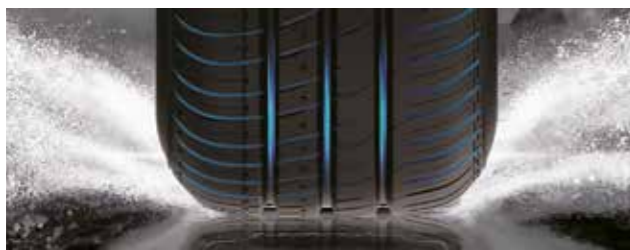
ECO



HIGH PERFORMANCE TYRE - 41 SIZES



Specially developed HP fuel-saving tyre for smaller city-cars and compact vehicles with optimised pattern design. Optimal safety level even under wet road conditions, low RR-compound for better fuel economy and very low tyre noise. High steering response and excellent braking.



Three wide longitudinal grooves and small lateral grooves located on the sidewall blocks effectively enhance wet grip and resist hydroplaning at high speeds.

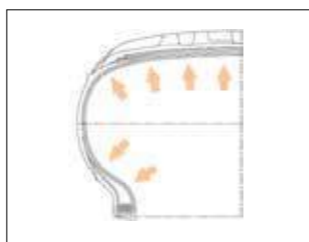


⚡ Added a lightning pattern in the tread for greater aesthetics.

Two centre ribs and reinforcing grooves help improve tyre rigidity; offer excellent handling when driving straight and can effectively reduce rolling resistance and improve fuel efficiency.

Solid outer shoulder large block design offers exceptional grip when cornering to ensure vehicle stability.

► Adjusted the internal structure of the tyre to optimise the distribution of contact stress which improves comfort and lowers rolling resistance.



Size	PR	LI	SR	RR	WG	NG Db	NG	OD (mm)	SW (mm)	Std Rim	Max Load (Kg)		UTQG
											Single	Dual	
155/65R13	Std	73	T	E	B	70	2	532	157	4.50B	365	-	360AA
155/70R13	Std	75	T	E	B	70	2	548	157	4.50B	387	-	360AA
155/80R13	Std	79	T	E	B	70	2	578	157	4.50B	437	-	360AA
165/65R13	Std	77	T	E	B	70	2	544	170	5.00B	412	-	360AA
165/70R13	Std	79	T	E	B	70	2	562	170	5.00B	437	-	360AA
165/80R13	Std	83	T	E	B	70	2	594	165	4.50B	487	-	360AA
175/65R13	Std	80	T	E	B	70	2	558	177	5.00B	450	-	360AA
175/70R13	Std	82	T	E	B	70	2	576	177	5.00B	475	-	360AA
185/70R13	Std	86	T	E	B	70	2	590	189	5.50B	530	-	360AA
155/65R14	Std	75	T	E	B	70	2	558	157	4.50B	387	-	360AA
165/55R14	Std	72	V	E	B	70	2	538	170	5J	355	-	360/A/A
165/60R14	Std	75	H	E	B	70	2	554	170	5J	387	-	360AA
165/60R14	Std	75	T	E	B	70	2	554	170	5J	387	-	360AA
165/65R14	Std	79	T	E	B	70	2	570	170	5J	437	-	360AA
165/70R14	Std	81	T	E	B	70	2	588	170	5J	462	-	360AA
165/70R14	XL	85	T	E	B	70	2	588	170	5J	515	-	360AA
175/65R14	Std	82	T	E	B	70	2	584	177	5J	475	-	360AA
175/65R14	Std	82	H	E	B	70	2	584	177	5J	475	-	360AA
175/65R14	XL	86	T	E	B	70	2	584	177	5J	530	-	360AA
175/70R14	Std	84	T	E	B	70	2	602	177	5J	500	-	360AA
175/70R14	XL	88	T	E	B	70	2	602	177	5J	560	-	360AA
175/80R14	Std	88	T	E	B	70	2	636	177	5J	560	-	360AA
185/60R14	Std	82	H	E	B	70	2	578	189	5.50B	475	-	360AA
185/65R14	Std	86	T	E	B	70	2	596	189	5.50B	530	-	360AA
185/65R14	Std	86	H	E	B	70	2	596	189	5.50B	530	-	360AA
185/70R14	Std	88	T	E	B	70	2	616	189	5.50B	560	-	360AA
185/70R14	Std	88	H	E	B	70	2	616	189	5.50B	560	-	360AA
195/65R14	Std	89	H	C	B	70	2	610	201	6J	580	-	360AA
195/70R14	Std	91	H	E	B	70	2	630	201	6J	615	-	360AA
145/65R15	Std	72	T	E	B	70	2	569	150	4.50B	355	-	360AA
155/60R15	Std	74	T	E	B	70	2	567	157	4.50B	375	-	360AA
165/50R15	Std	72	V	E	B	70	2	547	170	5J	355	-	360/A/A
165/55R15	Std	75	V	E	B	70	2	563	170	5J	387	-	360/A/A
165/65R15	Std	81	T	E	B	70	2	595	170	5J	462	-	360AA
165/65R15	Std	81	H	E	B	70	2	595	170	5J	462	-	360AA
175/55R15	Std	77	T	E	B	70	2	573	182	5.50B	412	-	360AA
175/60R15	Std	81	H	E	B	70	2	591	177	5J	462	-	360AA
175/60R15	Std	81	V	E	B	70	2	591	177	5J	462	-	360AA
175/65R15	XL	88	T	C	B	70	2	609	177	5J	560	-	360AA
175/65R15	Std	84	H	E	B	70	2	609	177	5J	500	-	360AA
175/65R15	Std	88	H	C	B	70	2	609	177	5J	560	-	360AA

ATREZZO ELITE



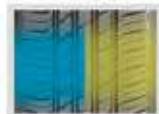
HIGH PERFORMANCE TYRE - 73 SIZES



New asymmetric HP tyre for compact and mid-size cars. Very high overall driving performance level on both dry and wet-road conditions. Special pattern design with solid outer shoulder part and specific compound mixture for increased dynamic handling and braking.



Four straight wide grooves connected by transverse sipes increase wet grip by effectively draining and removing water.



Asymmetric tread design, which takes into account inside drainage and effective outer handling, exert maximum tyre performance.



A strip within the outer groove not only makes the outer block more robust, but improves the handling performance; looks special, attractive, and stylish.



Simple staggered layer groove design makes the pattern more dynamic.

Size	PR	LI	SR	RR	WG	NG Db	NG	OD (mm)	SW (mm)	Standard Rim	Max Load (Kg)		UTQG
											Single	Dual	
185/55R14	Std	80	H	E	B	70	2	560	194	6J	450	-	360AA
185/55R15	Std	82	H	E	B	70	2	585	194	6J	475	-	360AA
185/55R15	Std	82	V	E	B	70	2	585	194	6J	475	-	360AA
185/60R15	Std	84	T	E	B	70	2	603	189	51/2J	500	-	360AA
185/60R15	XL	88	T	E	B	70	2	603	189	51/2J	560	-	360AA
185/60R15	Std	84	H	E	B	70	2	603	189	51/2J	500	-	360AA
185/60R15	XL	88	H	E	B	70	2	603	189	51/2J	560	-	360AA
185/65R15	Std	88	T	E	B	70	2	621	189	51/2J	560	-	360AA
185/65R15	XL	92	T	C	B	70	2	621	189	51/2J	630	-	360AA
185/65R15	Std	88	H	E	B	70	2	621	189	51/2J	560	-	360AA
195/50R15	Std	82	H	E	B	70	2	577	201	6J	475	-	360AA
195/50R15	Std	82	V	E	B	70	2	577	201	6J	475	-	360AA
195/55R15	Std	85	H	E	B	70	2	595	201	6J	515	-	360AA
195/55R15	Std	85	V	E	B	70	2	595	201	6J	515	-	360AA
195/60R15	Std	88	H	E	B	70	2	615	201	6J	560	-	360AA
195/60R15	Std	88	V	E	B	70	2	615	201	6J	560	-	360AA
195/60R15	Std	91	T	C	B	70	2	635	201	6J	615	-	360AA
195/65R15	Std	91	H	C	B	70	2	635	201	6J	615	-	360AA
195/65R15	XL	95	H	C	B	70	2	635	201	6J	690	-	360AA
195/65R15	Std	91	V	C	B	70	2	635	201	6J	615	-	360AA
205/50R15	Std	86	V	E	B	70	2	587	214	61/2J	530	-	360AA
205/55R15	Std	88	V	E	B	70	2	607	214	61/2J	560	-	360AA
205/60R15	Std	91	H	C	B	70	2	627	209	6J	615	-	360AA
205/60R15	Std	91	V	C	B	70	2	627	209	6J	615	-	360AA
205/60R15	XL	95	H	C	B	70	2	627	209	6J	690	-	360AA
205/65R15	XL	99	T	B	B	70	2	647	209	6J	775	-	360AA
205/65R15	Std	94	H	C	B	70	2	647	209	6J	670	-	360AA
205/65R15	Std	94	V	C	B	70	2	647	209	6J	670	-	360AA
215/65R15	Std	96	T	C	B	70	2	661	221	61/2J	710	-	360AA
215/65R15	Std	96	H	C	B	70	2	661	221	61/2J	710	-	360AA
215/65R15	XL	100	H	B	B	70	2	661	221	61/2J	800	-	360AA
185/50R16	Std	81	V	E	B	70	2	592	194	6J	462	-	360AA
185/55R16	Std	83	H	E	B	70	2	610	194	6J	487	-	360AA
185/55R16	Std	83	V	E	B	70	2	610	194	6J	487	-	360AA
185/55R16	XL	87	V	E	B	70	2	610	194	6J	545	-	360AA
195/50R16	Std	84	H	E	B	70	2	602	201	6J	500	-	360AA
195/50R16	Std	84	V	E	B	70	2	602	201	6J	500	-	360AA
195/50R16	XL	88	V	E	B	70	2	602	201	6J	560	-	360AA
195/55R16	Std	87	H	E	B	70	2	620	201	6J	545	-	360AA
195/55R16	Std	87	V	E	B	70	2	620	201	6J	545	-	360AA
195/55R16	XL	91	V	C	B	70	2	620	201	6J	615	-	360AA
195/60R16	Std	89	H	C	B	70	2	640	201	6J	580	-	360AA
195/60R16	Std	89	V	C	B	70	2	640	201	6J	580	-	360AA
195/65R16	Std	92	V	C	B	70	2	660	201	6J	630	-	360AA
205/50R16	Std	87	V	E	B	70	2	612	214	61/2J	545	-	360AA
205/55R16	Std	91	H	C	B	70	2	632	214	61/2J	615	-	360AA
205/55R16	Std	91	V	C	B	70	2	632	214	61/2J	615	-	360AA
205/55R16	XL	94	V	C	B	70	2	632	214	61/2J	670	-	360AA
205/55R16	Std	91	W	C	B	70	2	632	214	61/2J	615	-	360AA
205/60R16	Std	92	H	C	B	70	2	652	209	6J	630	-	360AA
205/60R16	Std	92	V	C	B	70	2	652	209	6J	630	-	360AA
205/60R16	XL	96	H	C	B	70	2	652	209	6J	710	-	360AA
205/60R16	Std	96	V	C	B	70	2	652	209	6J	710	-	360AA
215/55R16	Std	97	H	C	B	70	2	642	226	7J	730	-	360AA
215/55R16	Std	97	W	C	B	70	2	642	226	7J	730	-	360AA
215/60R16	XL	99	T	C	B	70	2	664	221	61/2J	775	-	360AA
215/60R16	Std	95	H	C	B	70	2	664	221	61/2J	690	-	360AA
215/60R16	XL	99	H	C	B	70	2	664	221	61/2J	775	-	360AA
215/60R16	Std	95	V	C	B	70	2	664	221	61/2J	690	-	360AA
215/60R16	XL	99	V	C	B	70	2	664	221	61/2J	775	-	360AA
215/65R16	Std	98	H	C	B	70	2	686	221	61/2J	750	-	360AA
225/50R16	XL	96	W	C	B	70	2	632	233	7J	710	-	360AA
225/55R16	XL	99	V	C	B	70	2	654	233	7J	775	-	360AA
225/60R16	Std	98	V	C	B	70	2	676	228	61/2J	750	-	360AA
225/60R16	XL	102	V	B	B	70	2	676	228	61/2J	850	-	360AA
225/60R16	Std	98	W	C	B	70	2	676	228	61/2J	750	-	360AA
235/60R16	Std	100	W	B	B	70	2	688	240	7J	800	-	360AA
205/55R17	Std	95	V	C	B	70	2	658	214	61/2J	690	-	360AA
225/60R17	Std	99	V	C	B	70	2	702	228	61/2J	775	-	360AA
235/55R17	Std	99	V	C	B	70	2	690	245	71/2J	775	-	360AA
235/60R17	Std	102	V	B	B	70	2	714	240	7J	850	-	360AA
215/55R18	Std	99	V	C	B	70	2	693	226	7J	775	-	360AA
225/60R18	Std	104	W	B	B	70	2	727	228	61/2J	900	-	360AA

ATREZZO

Z4+AS



ULTRA-HIGH PERFORMANCE TYRE - 25 SIZES



The **ATREZZO Z4+AS** is an ultra-high performance all-season tyre, designed for performance under all weather conditions. Engineered for high-speed performance, cornering, and braking, the Z4+AS lets you get more out of your car.

- Optimised to deliver a balance between ultra-high performance needs and comfort of everyday driving in all weather conditions
- Special silica blends maximise grip and handling stability in dry while maintaining outstanding wear characteristics



Size	PR	LI	SR	RR	WG	NG Db	NG	OD (mm)	SW (mm)	Standard Rim	Max Load (Kg)		UTQG
											Single	Dual	
195/50R15	Std	82	V	F	C	72	2	577	201	6J	475	-	380/AA/A
205/50R16	Std	87	W	F	C	72	2	612	214	6 1/2J	545	-	380/AA/A
205/55R16	Std	91	W	F	C	72	2	632	214	6 1/2J	615	-	380/AA/A
215/55R16	XL	97	W	E	B	72	2	642	226	7J	730	-	380/AA/A
225/50R16	Std	92	W	E	B	72	2	632	233	7J	630	-	380/AA/A
225/55R16	XL	99	W	E	B	72	2	654	233	7J	775	-	380/AA/A
205/40R17	XL	84	W	F	C	72	2	596	212	7 1/2J	500	-	380/AA/A
205/50R17	XL	93	W	F	C	72	2	638	214	6 1/2J	650	-	380/AA/A
205/45ZR17	XL	88	W	F	C	72	2	616	206	7J	560	-	380/AA/A
215/45R17	XL	91	W	F	C	72	2	626	213	7J	615	-	380/AA/A
215/50R17	XL	95	W	E	B	72	2	648	226	7J	690	-	380/AA/A
225/45R17	XL	94	W	E	B	72	2	634	225	7 1/2J	670	-	380/AA/A
235/45R17	XL	97	W	E	B	72	2	644	236	8J	730	-	380/AA/A
245/40R17	XL	95	W	E	B	72	2	628	248	8 1/2J	690	-	380/AA/A
245/45R17	XL	99	W	E	B	72	2	652	243	8J	775	-	380/AA/A
215/35R18	XL	84	W	F	C	72	2	607	218	7 1/2J	500	-	380/AA/A
225/40R18	XL	92	W	E	B	72	2	637	230	8J	630	-	380/AA/A
225/45R18	XL	95	W	E	B	72	2	659	225	7 1/2J	690	-	380/AA/A
235/40R18	XL	95	W	E	B	72	2	645	241	8 1/2J	690	-	380/AA/A
235/50R18	XL	101	W	E	B	72	2	693	245	7 1/2J	825	-	380/AA/A
245/40R18	XL	97	W	E	B	72	2	653	248	8 1/2J	730	-	380/AA/A
245/45R18	XL	100	W	E	B	72	2	677	243	8J	800	-	380/AA/A
255/45R18	XL	103	W	E	B	72	2	687	255	8 1/2J	875	-	380/AA/A
245/35R20	XL	95	W	E	B	72	2	680	248	8 1/2J	690	-	380/AA/A
255/35R20	XL	97	W	E	B	72	2	686	260	9J	730	-	380/AA/A



High angle V-shaped tread grooves:

Aggressive high angle grooves enhance water evacuation to improve wet handling and hydroplane resistance.



Grooved tread block walls:

Reinforces block stiffness, promoting even load distribution, improved handling and wear characteristics. Designed to reduce pipe resonance for a more comfortable and quiet ride.

Taper tread edges:

Promotes uniform contact pressure for improved stability.

ATREZZO ZSR



ULTRA-HIGH PERFORMANCE TYRE - 58 SIZES



Size	PR	LI	SR	RR	WG	NG Db	NG	OD (mm)	SW (mm)	Standard Rim	Max Load (Kg)		UTQG
											Single	Dual	
195/45R15	Std	78	V	E	B	71	2	557	195	6 1/2J	425	-	340/A/A
195/40R16	XL	80	W	E	B	71	2	562	200	7J	450	-	340/A/A
195/45R16	XL	84	V	E	B	71	2	582	195	6 1/2J	500	-	340/A/A
205/45R16	XL	87	V	E	B	71	2	590	206	7J	545	-	340/A/A
205/45R16	XL	87	W	E	B	71	2	590	206	7J	545	-	340/A/A
205/50R16	Std	87	W	E	B	71	2	612	214	6 1/2J	545	-	340/A/A
205/55R16	Std	91	W	E	B	71	2	632	214	6 1/2J	615	-	340/A/A
215/55R16	XL	97	W	E	B	71	2	642	226	7J	730	-	340/A/A
225/55R16	XL	99	W	E	B	71	2	654	233	7J	775	-	340/A/A
195/40R17	XL	81	V	E	B	71	2	588	200	7J	462	-	340/A/A
205/40R17	XL	84	W	E	B	71	2	596	212	7 1/2J	500	-	340/A/A
205/45R17	XL	88	W	E	B	71	2	616	206	7J	560	-	340/A/A
205/50R17	XL	93	W	E	B	71	2	638	214	6 1/2J	650	-	340/A/A
215/35R17	XL	83	W	E	B	71	2	582	218	7 1/2J	487	-	340/A/A
215/40R17	XL	87	W	E	B	71	2	604	218	7 1/2J	545	-	340/A/A
215/45R17	XL	91	W	E	B	71	2	626	213	7J	615	-	340/A/A
215/50R17	XL	95	V	E	B	71	2	648	226	7J	690	-	340/A/A
215/50R17	XL	95	W	E	B	71	2	648	226	7J	690	-	340/A/A
215/55R17	XL	98	W	E	B	71	2	668	226	7J	750	-	340/A/A
225/45R17	XL	94	W	E	B	71	2	634	225	7 1/2J	670	-	340/A/A
225/50R17	XL	98	W	E	B	71	2	658	233	7J	750	-	340/A/A
225/55R17	XL	101	V	E	B	71	2	680	233	7J	825	-	340/A/A
225/55R17	XL	101	W	E	B	71	2	680	233	7J	825	-	340/A/A
235/45R17	XL	97	W	E	B	71	2	644	236	8J	730	-	340/A/A
245/40R17	XL	95	W	E	B	71	2	628	248	8 1/2J	690	-	340/A/A
245/45R17	XL	99	W	E	B	71	2	652	243	8J	775	-	340/A/A
215/35R18	XL	84	W	E	B	71	2	607	218	7 1/2J	500	-	340/A/A
215/40R18	XL	89	V	E	B	71	2	629	218	7 1/2J	580	-	340/A/A
215/45ZR18	XL	93	W	E	B	71	2	651	213	7J	650	-	340/A/A
225/35ZR18	XL	87	W	E	B	71	2	615	230	8J	545	-	340/A/A

High Speed Stability

A continuous intermediate longitudinal pattern provides high-speed stability when running straight making for an easy ride.

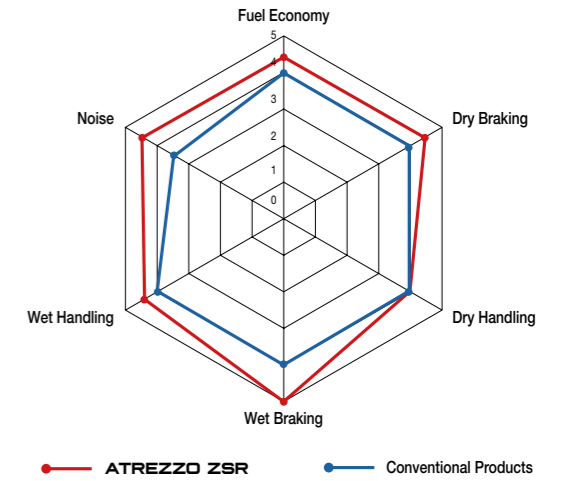
Corner Handling

Added strength shoulder design, improved rigidity, sensitive cornering feedback, easier to grip when cornering.



The new generation **ATREZZO ZSR** is engineered to deliver precise wet and dry handling characteristics. An asymmetrical design and enhanced rubber compound rises to the challenge and provides exceptional performance on the street or on the highway.

- Asymmetrical tread design for uncompromising performance
- Wide shoulder tread block with high angle sipes for high-speed cornering performance
- Variable pitch tread design provides a smooth, quiet ride
- Advance tread compound delivers superior cornering and exceptional handling
- Deep, circumferential grooves and hundreds of biting edges deliver excellent wet and dry traction



Size	PR	LI	SR	RR	WG	NG Db	NG	OD (mm)	SW (mm)	Standard Rim	Max Load (Kg)		UTQG
											Single	Dual	
225/40R18	XL	92	W	E	B	71	2	637	230	8J	630	-	340/A/A
225/45R18	XL	95	W	E	B	71	2	659	225	7 1/2J	690	-	340/A/A
225/50ZR18	Std	95	W	E	B	71	2	683	233	7J	690	-	340/A/A
235/40R18	XL	95	W	E	B	71	2	645	241	8 1/2J	690	-	340/A/A
235/45R18	XL	98	W	E	B	71	2	669	236	8J	750	-	340/A/A
235/50R18	XL	101	W	E	B	71	2	693	245	7 1/2J	825	-	340/A/A
245/40R18	XL	97	W	E	B	71	2	653	248	8 1/2J	730	-	340/A/A
245/45R18	XL	100	W	E	B	71	2	677	243	8J	800	-	340/A/A
255/35R18	XL	94	W	E	B	71	2	635	260	9J	670	-	340/A/A
255/45R18	XL	103	W	E	B	71	2	687	255	8 1/2J	875	-	340/A/A
265/35R18	XL	97	W	E	B	71	2	643	271	9 1/2J	730	-	340/A/A
215/35R19	XL	85	W	E	B	71	2	633	218	7 1/2J	515	-	340/A/A
225/35R19	XL	88	W	E	B	71	2	641	230	8 J	560	-	340/A/A
235/35R19	XL	91	W	E	B	71	2	647	241	8 1/2J	615	-	340/A/A
245/35R19	XL	93	W	E	B	71	2	655	248	8 1/2J	650	-	340/A/A
245/40R19	XL	98	W	E	B	71	2	679	248	8 1/2J	750	-	340/A/A
255/35R19	XL	96	Y	E	B	71	2	661	260	9J	710	-	340/A/A
275/30R19	XL	96	W	E	B	71	2	649	278	9 1/2J	710	-	340/A/A
275/35R19	XL	96	W	E	B	71	2	675	278	9 1/2J	710	-	340/A/A
275/30ZR19	XL	96	Y	E	B	71	2	649	278	9 1/2J	710	-	340/A/A
225/35R20	XL	90	W	E	B	71	2	666	230	8J	545	-	340/A/A
225/35ZR20	XL	93	W	E	B	71	2	666	230	8J	600	-	340/A/A
245/35R20	XL	95	W	E	B	71	2	680	248	8 1/2J	690	-	340/A/A
245/35ZR20	XL	95	Y	E	B	71	2	680	248	8 1/2J	690	-	340/A/A
255/35R20	XL	97	W	E	B	71	2	686	260	9J	730	-	340/A/A
255/35ZR20	XL	97	Y	E	B	71	2	686	260	9J	730	-	340/A/A
275/30R20	XL	97	W	E	B	71	B	674	278	9 1/2J	730	-	340/A/A
275/30ZR20	XL	97	Y	E	B	71	B	674	278	9 1/2J	730	-	340/A/A



Excellent Drainage Performance

Bold un-equal width groove design can drain water quickly to prevent hydroplaning and the extra thick grooves offer greater fuel efficiency.



Low Noise Design

Wide-angle (60°) open lateral groove design effectively reduces generated noise; measured outdoor noise reduction by about 3%. Asymmetrical multi-angle groove pattern combination allow for a balanced dispersion of dynamic vibration which effectively reduces interior noise.

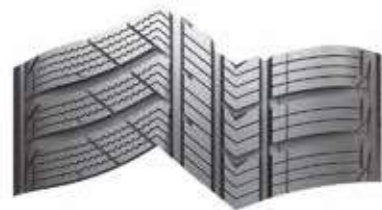
ATREZZO 4 SEASONS



ALL-SEASON PERFORMANCE TYRE - 24 SIZES



Completely new revolutionary all-season tyre, available in most relevant sizes. Specially designed asymmetric pattern layout and tread compound for ensuring outstanding handling and braking performance under severe and demanding road and weather conditions throughout whole year. Lateral zig-zag grooves and sipes for high traction on snow and ice. Compact outer shoulder blocks for ensuring high steering response whiles dynamic driving on dry surface.



The unique 4 season asymmetric pattern is designed for use all year round.

Zig-zag shaped lateral grooves, slots and sipes maximise the bite in both snowy and wet conditions; to ensure safe driving in wet conditions, the circumferential grooves drain water quickly and effectively.

Size	PR	LI	SR	RR	WG	NG Db	NG	OD (mm)	SW (mm)	Standard Rim	Max Load (Kg)		UTQG
											Single	Dual	
165/70R14	Std	81	T	E	C	71	2	588	170	5J	462	-	300AA
175/65R14	Std	82	T	E	C	71	2	584	177	5J	475	-	300/A/A
185/60R14	Std	82	H	E	C	71	2	578	189	5.5J	500	-	300/A/A
185/65R14	Std	86	T	E	C	71	2	596	189	5.5J	530	-	300/A/A
175/65R15	Std	88	H	E	C	71	2	609	177	5J	560	-	300/A/A
185/55R15	Std	82	H	E	C	71	2	585	194	6J	475	-	300/A/A
185/60R15	Std	88	H	E	C	71	2	603	189	5.5J	560	-	300/A/A
185/65R15	Std	88	T	E	C	71	2	621	189	5.5J	560	-	300/A/A
185/65R15	XL	92	H	E	C	71	2	621	189	5.5J	630	-	300/A/A
195/55R15	Std	85	H	E	C	72	2	595	201	6J	515	-	300/A/A
195/60R15	Std	88	H	E	C	72	2	615	201	6J	560	-	300/A/A
195/65R15	Std	91	H	E	C	72	2	635	201	6J	615	-	300AA
195/65R15	XL	95	T	E	C	72	2	635	201	6J	690	-	300AA
195/65R15	Std	91	T	E	C	72	2	635	201	6J	615	-	300AA
195/55R16	Std	87	V	E	C	72	2	620	201	6J	545	-	300/A/A
195/55R16	XL	91	V	E	C	72	2	620	201	6J	615	-	300/A/A
205/55R16	Std	91	H	E	C	72	2	632	214	61/2J	615	-	300AA
205/55R16	XL	94	H	E	C	72	2	632	214	61/2J	670	-	300AA
205/60R16	Std	96	V	E	C	72	2	652	209	6J	710	-	300/A/A
215/55R16	Std	93	H	E	C	72	2	642	226	7J	650	-	300/A/A
215/55R16	XL	97	V	C	C	72	2	642	226	7J	730	-	300/A/A
215/60R16	XL	99	H	C	C	72	2	664	221	61/2J	775	-	300AA
225/55R16	Std	99	V	C	C	72	2	654	233	7J	775	-	300/A/A
225/45R17	XL	94	V	E	C	72	2	634	225	71/2J	670	-	300AA

1 Dry handling performance is enhanced due to the strong square block pattern on the outside.



2 Newly introduced 3-dimensional grooves and sipes ensure optimal performance for the entire life of the tyre.



TERRAMAX CVR



ALL-SEASON LUXURY CROSSOVER & SUV TYRE - 20 SIZES



The **TERRAMAX CVR** is specifically engineered for SUV and crossovers. The CVR delivers exceptional handling and stability for today's crossover vehicles demand without compromising ride comfort.

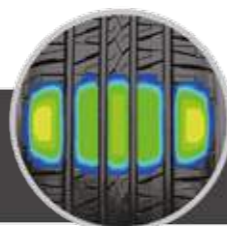
- Smooth, quiet ride and comfort for highway driving
- Top all-round performance on wet and dry surfaces
- Stable drive and excellent ride and handling at high speeds
- Durable and long lasting structure
- Suitable on partial off-road usage
- H, V, W, Y rated construction



Find out more about Sailun's Environmentally-Friendly (EFT) Technology programme and Smartway® Verified Technologies Low Rolling Resistance Tyres on page 30.



Large shoulder blocks and Centre Ribs provide responsiveness and high speed stability.



Widened Tread Design
Larger ground contact area which effectively improves the grip performance.

Size	PR	LI	SR	RR	WG	NG Db	NG	OD (mm)	SW (mm)	Standard Rim	Max Load (Kg)		UTQG
											Single	Dual	
205/70R15	Std	96	H	C	E	72	3	669	209	6J	710	-	440/A/A
225/70R15	Std	100	H	C	C	71	2	697	228	6 1/2J	800	-	500AB
215/65R16	XL	102	H	C	E	73	3	686	221	6 1/2J	850	-	440/A/A
215/70R16	Std	100	H	C	E	72	3	708	221	6 1/2J	800	-	440/A/A
235/60R16	Std	100	H	C	C	72	3	688	240	7J	800	-	440/A/A
235/70R16	Std	106	H	C	C	72	3	736	240	7J	950	-	440/A/A
245/70R16	XL	111	H	C	C	73	3	750	248	7J	1090	-	440/A/A
265/70R16	Std	112	H	C	C	74	3	778	272	8J	1120	-	440/A/A
275/70R16	Std	114	H	C	C	72	2	792	279	8J	1180	-	500AB
215/60R17	Std	96	H	C	E	72	3	690	221	6 1/2J	710	-	440/A/A
225/60R17	Std	99	H	C	E	72	3	702	228	6 1/2J	775	-	440/A/A
225/65R17	Std	102	H	C	E	72	3	724	228	6 1/2J	850	-	440/A/A
235/55R17	XL	103	V	C	C	73	3	690	245	7 1/2J	875	-	420/A/A
235/65R17	XL	108	H	C	C	73	3	738	240	7J	1000	-	440/A/A
225/55R18	Std	98	V	C	E	72	3	705	233	7J	750	-	420/A/A
235/55R18	Std	100	V	C	C	72	3	715	245	7 1/2J	800	-	420/A/A
235/60R18	Std	103	V	C	C	72	3	739	240	7J	875	-	440/A/A
255/55R18	XL	109	V	C	C	74	3	737	265	8J	1030	-	420/A/A
255/50R19	XL	107	V	C	C	74	3	739	265	8J	975	-	420/A/A
255/50R20	XL	109	W	C	C	74	3	764	265	8J	1030	-	420/A/A



Compared with a pure off-road tyre, the pattern is more dense with protuberant designs which offer greater driving comfort and can reduce noise.

Four longitudinal main grooves and small gradually widening lateral grooves reduce rolling resistance and can quickly drain water, providing excellent hydroplaning resistance.

Durable carcass structure and a special compound allows for high wear life, increased ride comfort and top all round performance.

ATREZZO SVR LX



ULTRA HIGH PERFORMANCE SUV TYRE - 18 SIZES



The **ATREZZO SVR LX** is a premium high-performance tyre designed for SUVs, sport trucks, and crossover vehicles. A sporty design engineered with an advanced tread design, the SVR LX accentuates the appearance of your ride, while providing unparalleled performance, comfort, and tread life.

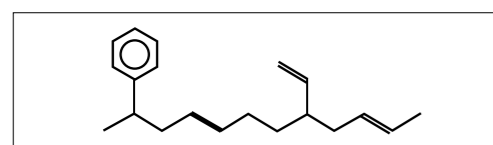
- Perfect balance of style, luxury, and confident, ultra-high performance in all weather conditions
- Available in stylish 20"-24" sizes with M+S ratings for a wide range of OE and plus-size fitments



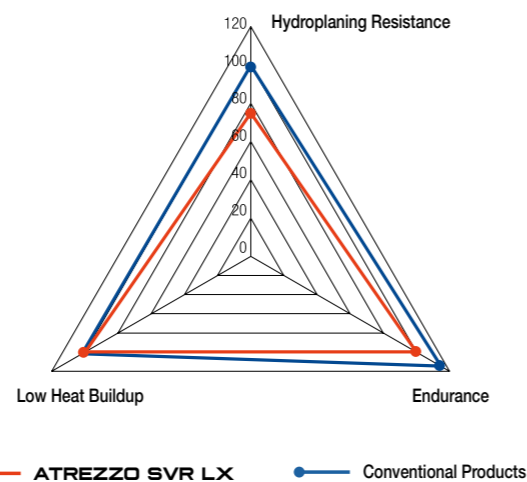
In 2011, the series was selected by the global automotive media to be awarded the

"SEMA 2011 Best New Product Award."

The first time this award had been given to a China domestic tyre brand.



- 1 The combination of new carbon black / high dispersion silica ensure excellent wear resistance and provide good fuel economy and wet grip.
- 2 The use of a polymerised styrene-butadiene solution provides a substantial increase of wet grip performance.



Size	PR	LI	SR	RR	WG	NG Db	NG	OD (mm)	SW (mm)	Standard Rim	Max Load (Kg)		UTQG
											Single	Dual	
255/45R20	XL	105	V	E	E	73	2	738	255	8 1/2J	925	-	420/A/A
265/50R20	XL	111	V	C	E	73	2	774	277	8 1/2J	1090	-	420/A/A
275/40R20	XL	106	W	C	E	73	2	728	278	9 1/2J	950	-	420/A/A
275/45R20	XL	110	V	C	E	73	2	756	273	9J	1060	-	420/A/A
275/55R20	XL	117	V	C	E	73	2	810	284	8 1/2J	1285	-	420/A/A
275/60R20	XL	119	S	C	E	73	2	838	279	8J	1360	-	420/A/A
285/50R20	XL	116	V	C	E	73	2	794	297	9J	1250	-	420/A/A
295/45R20	XL	114	V	C	E	73	2	774	296	10J	1180	-	420/A/A
305/50R20	XL	120	V	C	E	73	2	814	316	9 1/2J	1400	-	420/A/A
255/30R22	XL	95	V	E	E	73	2	713	260	9J	690	-	420/A/A
265/35R22	XL	102	W	E	E	73	2	745	271	9 1/2J	850	-	420/A/A
265/40R22	XL	106	V	C	E	73	2	771	271	9 1/2J	950	-	420/A/A
305/40R22	XL	114	V	C	E	73	2	803	313	11J	1180	-	420/A/A
305/45R22	XL	118	V	C	E	73	2	833	303	10J	1320	-	420/A/A
285/40R24	XL	112	V	C	E	73	2	838	290	10J	1120	-	420/A/A
295/35R24	XL	110	V	C	E	73	2	816	301	10 1/2J	1060	-	420/A/A
295/40R24	XL	114	V	C	E	73	2	846	301	10 1/2J	1180	-	420/A/A
305/35R24	XL	112	V	C	E	73	2	824	313	11J	1120	-	420/A/A



All grooves employ a slight inclined angle design

Provide excellent hydroplaning resistance by effectively breaking through water film on wet roads.



Variable pitch design on the lateral shoulder grooves and smaller grooves

Improve grip and handling on various complex road conditions; and effectively reduce noise, providing a quiet driving experience.

SVR

Uniform v-shaped tread pattern design

Provide excellent grip performance, handling, and high speed performance in both dry and wet conditions. Effectively drains water to ensure safe driving in wet conditions.

Shoulder grooves have a unique sipe design fit with miniature sections

In order to provide better stability on dry and wet roads, as well as effectively reduce noise.



TERRAMAX

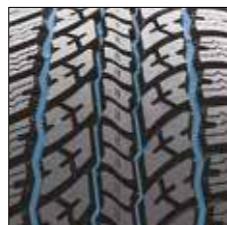


ALL-SEASON LIGHT TRUCK & SUV TYRE - 22 SIZES

Size	PR	LI	SR	RR	WG	NG Db	NG	OD (mm)	SW (mm)	Standard Rim	Max Load (Kg)		UTQG
											Single	Dual	
31X10.50R15	6	109	R	F	C	72	2	775	268	8 1/2J	1030	-	500AB
235/75R15	Std	105	T	E	C	71	2	733	235	6 1/2J	925	-	500AB
225/70R16	Std	103	T	E	C	71	2	722	228	6.5J	875	-	500/A/B
235/70R16	Std	106	T	E	C	71	2	736	240	7J	950	-	500AB
245/70R16	Std	107	T	E	C	71	2	750	248	7J	975	-	500AB
255/70R16	Std	111	T	E	C	71	2	764	260	7 1/2J	1090	-	500AB
265/70R16	Std	112	T	E	C	72	2	778	272	8J	1120	-	500AB
265/75R16	Std	116	T	E	C	72	2	804	267	7.5J	1250	-	500/A/B
LT235/85R16	10	120/116	R	E	B	73	2	806	235	6.5J	1380	1260	Not Required
LT245/75R16	10	120/116	R	E	B	73	2	774	248	7J	1380	1260	Not Required
235/65R17	Std	104	T	E	C	71	2	738	240	7J	900	-	500AB
245/65R17	Std	107	T	E	C	71	2	750	248	7J	925	-	500AB
245/70R17	Std	110	T	E	C	71	2	776	248	7J	1060	-	500/A/B
265/70R17	Std	115	T	E	C	72	2	804	272	8J	1215	-	500/A/B
215/75R15	Std	100	S	E	C	71	2	703	216	6J	800	-	500/A/B
225/75R15	Std	102	S	E	C	71	2	719	223	6J	850	-	500/A/B
LT235/75R15	6	104/101	R	F	B	72	2	728.8	239	6 1/2J	900	825	Not Required
215/85R16	10	115/112	R	F	C	72	2	772	216	6J	1215	1120	500/A/B
225/75R16	10	115/112	R	F	B	72	2	744	223	6J	1215	1120	500/A/B
245/75R16	Std	111	T	E	C	71	2	774	248	7J	1090	-	500/A/B
LT265/75R16	10	123/120	R	E	B	73	2	804	267	7 1/2J	1550	1400	Not Required
LT265/70R17	10	121/118	R	F	B	72	2	804	272	8J	1450	1320	Not Required

The **TERRAMAX H/T** is designed to let you challenge on and off-road terrains with confidence. A high performance light truck tyre designed with quiet on-road performance in city and highway use, the Terramax H/T features full-depth sipes to provide excellent traction throughout its long life.

- Designed with the SUV in mind, the Terramax H/T balances off-road capabilities with characteristics of a comfortable highway tyre
- Specially formulated compound for improved wear characteristics using the latest in environmentally friendly processes and materials



4-Channel zig-zag grooves: Maximise water drainage for improved handling and grip in all weather conditions. Zig-zag pattern designed to minimise irregular wear.



Wetland sipe system: Full depth sipes for superior traction and control in wet and snow conditions.

TERRAMAX



ON OFF ROAD LIGHT TRUCK & SUV TYRE - 16 SIZES



Size	PR	LI	SR	RR	WG	NG Db	NG	OD (mm)	SW (mm)	Standard Rim	Max Load (Kg)		UTQG
											Single	Dual	
215/75R15	Std	100	S	E	C	72	2	703	216	6J	800	-	500/A/B
235/75R15	XL	109	S	E	C	72	2	733	235	6 1/2J	1030	-	500/A/B
235/70R16	Std	106	S	E	C	72	2	736	240	7J	950	-	500/A/B
245/75R16	Std	111	S	E	C	72	2	774	248	7J	1090	-	500/A/B
265/70R16	Std	112	T	E	C	73	2	778	272	8J	1120	-	500/A/B
265/75R16	Std	116	S	E	C	73	2	804	267	7 1/2J	1250	-	500/A/B
275/70R16	Std	114	S	E	C	73	2	792	279	8J	1180	-	500/A/B
235/65R17	Std	104	S	E	C	72	2	738	240	7J	900	-	500/A/B
245/65R17	Std	107	S	E	C	72	2	750	248	7J	975	-	500/A/B
265/65R17	Std	112	S	E	C	73	2	776	272	8J	1120	-	500/A/B
265/70R17	Std	115	S	E	C	73	2	804	272	8J	1215	-	500/A/B
275/65R17	Std	115	S	E	C	73	2	790	279	8J	1215	-	500/A/B
275/65R18	Std	116	T	E	C	73	2	815	279	8J	1250	-	500/A/B
265/50R20	XL	111	T	E	C	73	2	774	277	8 1/2J	1090	-	500/A/B
275/55R20	XL	117	T	E	C	73	2	810	284	8 1/2J	1285	-	500/A/B
275/60R20	Std	115	T	E	C	73	2	838	279	8J	1215	-	500/A/B

The **TERRAMAX A/T** is designed to deliver superior traction for SUVs, pickups and vans both off and on the road. The A/T provides exceptional handling, on-and off-road stability while maintaining a comfortable ride.

- Aggressive open shoulder tread design expels water, snow, slush and mud for optimum traction in all terrain conditions
- Solid centre rib provides superior ride comfort and control
- Extra deep tread sipes at varying angles improves comfort without sacrificing traction



4-Channel Zig-zag Grooves
Maximise water drainage for improved handling and grip in all weather conditions. Zig-zag pattern designed to minimise irregular wear.



Solid centre rib
Provides superior comfort and control.



Multi-directional sipe system
Extra deep tread sipes at varying angles improve comfort without sacrificing traction.

SL12



COMMERCIAL LIGHT TRUCK TYRE – 3 SIZES

Size	PR	LI	SR	RR	WG	NG Db	NG	OD (mm)	SW (mm)	Standard Rim	Max Load (Kg)		UTQG
											Single	Dual	
185R14	8	102/100	Q	E	C	72	2	650	188	5 1/2J	850	800	Not Required
195R14	8	106/104	Q	E	C	72	2	666	198	5 1/2J	950	900	Not Required
195R15	8	106/104	S	E	C	72	2	690	198	5 1/2J	950	900	Not Required

- Designed for delivery vehicles and demanding regional applications featuring a symmetrical pattern with extra wide grooves
- Quiet-comfortable ride, with an enhanced compound engineered to deliver exceptional mileage
- Extra wide zig-zag grooves deliver enhanced wet traction and exceptional low speed traction
- Full-depth microsipes improve heat dissipation and braking traction



Wide shoulder
Reduces road noise and improves lateral stability.



COMMERCIO

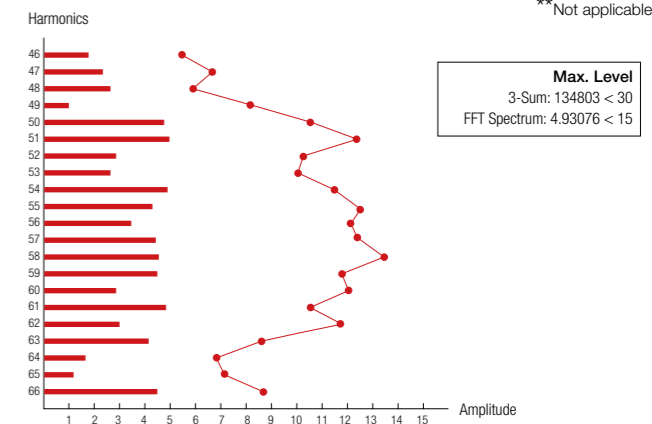
VX1



COMMERCIAL LIGHT TRUCK TYRE – 16 SIZES

Size	PR	LI	SR	RR	WG	NG Db	NG	OD (mm)	SW (mm)	Standard Rim	Max Load (Kg)		UTQG
											Single	Dual	
165/70R14	6	89/87	T	E	C	71	2	588	170	5J	580	545	Not Required
175/65R14	6	90/88	T	E	C	71	2	584	177	5J	600	560	Not Required
195/70R15	8	104/102	R	E	C	71	2	655	201	6J	900	850	Not Required
205/65R15	6	102/100	T	E	C	71	2	647	209	6J	850	800	Not Required
205/70R15	8	106/104	R	C	C	71	2	669	209	6J	950	900	Not Required
215/70R15	8	109/107	R	C	C	71	2	683	221	6 1/2J	1030	975	Not Required
225/70R15	8	112/110	R	C	C	71	2	697	228	6 1/2J	1120	1060	Not Required
195/60R16	6	99/97	H	E	C	71	2	640	201	6J	775	730	Not Required
195/65R16	8	104/102	T	E	C	71	2	660	201	6J	900	850	Not Required
195/75R16	8	107/105	Q	C	C	71	2	698	196	5 1/2J	975	925	Not Required
205/65R16	8	107/105	T	C	C	71	2	672	209	6J	975	925	Not Required
205/75R16	8	111/108	R	C	C	71	2	714	203	5 1/2J	1060	1000	Not Required
215/65R16	8	109/107	R	C	C	71	2	686	221	6 1/2J	1030	975	Not Required
215/75R16	8	113/111	R	C	C	71	2	728	216	6J	1150	1090	Not Required
225/65R16	8	112/110	R	C	C	71	2	698	228	6 1/2J	1120	1060	Not Required
235/65R16	8	115/113	R	C	C	71	2	712	240	7J	1215	1150	Not Required

- Engineered for vans transporting heavy loads
- Reinforced shoulder delivers exceptional stability and handling performance
- Reduced rolling resistance for lower energy consumption and extended tread life
- Wide circumferential grooves provide superior wet traction and minimises stopping distance
- Excellent ride comfort



Variable Pitch Design
Employs a variable pitch design created through computer drafting which optimises the deviation between upper and lower mold patterns to reduce noise and create a better driving environment.

1 Handling and Strong Grip.
Centre blocks and shoulder all new sipe design improve manoeuvrability, dissipate heat, improve traction, and offer greater driving comfort.

2 Low noise when traveling.
The central angle tread groove reduces tyre noise.



ICE BLAZER WSL2



STUDLESS WINTER TYRE - 39 SIZES

Size	PR	LI	SR	RR	WG	NG Db	NG	OD (mm)	SW (mm)	Standard Rim	Max Load (Kg)		UTQG
											Single	Dual	
155/70R13	STD	75	T	E	E	71	2	548	157	4.50B	387	**	**
155/80R13	STD	79	T	E	E	71	2	578	157	4.50B	437	**	**
165/70R13	STD	79	T	E	E	71	2	562	170	5J	437	**	**
165/70R13	XL	83	T	E	E	71	2	562	170	5J	487	**	**
175/65R13	STD	80	T	E	E	71	2	553	180	5J	450	**	**
175/70R13	STD	82	T	E	E	71	2	576	177	5J	475	**	**
155/65R14	STD	75	T	E	E	71	2	558	157	4.50B	387	**	**
165/70R14	STD	81	T	E	E	71	2	588	170	5J	462	**	**
175/65R14	STD	82	T	E	E	71	2	584	177	5J	475	**	**
175/70R14	STD	84	T	E	E	71	2	602	177	5J	500	**	**
185/60R14	STD	82	T	E	E	71	2	578	189	5 1/2J	475	**	**
185/65R14	STD	86	T	E	E	71	2	596	189	5 1/2J	530	**	**
185/70R14	STD	88	T	E	E	71	2	612.4	190	5 1/2J	560	**	**
195/60R14	STD	86	T	E	E	71	2	590	201	6J	530	**	**
165/65R15	STD	81	T	E	E	71	2	590	176	5J	462	**	**
175/65R15	STD	84	T	E	E	71	2	609	177	5J	500	**	**
185/55R15	STD	82	H	E	E	71	2	585	194	6J	475	**	**
185/60R15	STD	84	T	E	E	71	2	603	189	5 1/2J	500	**	**
185/60R15	XL	88	T	E	E	71	2	603	189	5 1/2J	560	**	**
185/65R15	STD	88	T	E	E	71	2	621	189	5 1/2J	560	**	**
195/50R15	STD	82	H	E	E	71	2	577	201	6J	475	**	**
195/55R15	STD	85	H	E	E	71	2	595	201	6J	515	**	**
195/60R15	STD	88	H	E	E	71	2	615	201	6J	560	**	**
195/65R15	STD	91	T	E	E	71	2	635	201	6J	615	**	**
195/65R15	XL	95	T	E	E	71	2	635	201	6J	690	**	**
205/65R15	STD	94	H	E	E	71	2	642.2	219	6J	670	**	**
205/55R16	STD	91	T	E	E	71	2	632	214	6 1/2J	615	**	**
205/55R16	STD	91	H	E	E	71	2	632	214	6 1/2J	615	**	**
205/55R16	XL	94	H	E	E	71	2	632	214	6 1/2J	670	**	**
205/60R16	STD	92	H	E	E	71	2	652	209	6J	630	**	**
205/60R16	XL	96	H	E	E	71	2	652	209	6J	710	**	**
215/55R16	STD	93	H	C	C	71	2	642	226	7J	650	**	**
215/60R16	STD	95	H	C	C	71	2	664	221	6 1/2J	690	**	**
215/65R16	STD	98	H	C	C	71	2	686	221	6 1/2J	750	**	**
225/55R16	XL	99	H	C	C	71	2	654	233	7J	775	**	**
205/50R17	XL	93	H	E	E	71	2	638	214	6 1/2J	650	**	**
225/45R17	XL	94	H	C	C	71	2	634	225	7 1/2J	670	**	**
225/50R17	XL	98	H	C	C	71	2	658	233	7J	750	**	**
245/40R18	XL	97	V	C	C	71	2	649.2	254	8 1/2J	730	**	**

**Not applicable



Unique L-shaped main grooves:
Designed specifically to promote aggressive bite in deep snow, slush, and wet conditions without compromising road noise.

The **ICE BLAZER WSL2** is a studless performance winter tyre, providing excellent slush, snow, and wet traction in cold climate conditions, while delivering a quiet and comfortable ride on dry roads.

- Green technology: Extensive use of enviro-friendly materials that meet European REACH requirements
- Specially formulated compounds and advanced dispersion technology keeps rubber flexible for maximum performance in extreme cold temperatures improving safety and handling in Northern winter conditions



X-grooves in outer tread block:
Optimised to provide maximum self-cleaning characteristics to promote maximum stability and multi-directional grip in snow, slush, and wet conditions while minimising road noise.



Multi-directional high density siping:
Engineered to maximise directional grip on snow and ice while also minimising road noise.



ICE BLAZER WST1



STUDDABLE WINTER TYRE – 94 SIZES



Size	PR	LI	SR	RR	WG	NG Db	NG	OD (mm)	SW (mm)	Standard Rim	Max Load (Kg)		UTQG
											Single	Dual	
155/70R13	STD	75	T	F	C	71	2	548	157	4.50B	387	**	**
155/80R13	STD	79	T	F	C	71	2	578	157	4.50B	437	**	**
165/70R13	STD	79	T	F	C	71	2	562	170	5J	437	**	**
175/70R13	STD	82	T	F	C	71	2	576	177	5J	475	**	**
155/65R14	STD	75	T	F	C	71	2	558	157	4.50B	387	**	**
165/65R14	STD	79	T	F	C	71	2	570	170	5J	437	**	**
175/65R14	STD	82	T	F	C	71	2	584	177	5J	475	**	**
175/65R14C	6PR	90/88	Q	E	B	72	2	584	177	5J	600	560	**
175/70R14	STD	84	T	F	C	71	2	602	177	5J	500	**	**
185R14C	8PR	102/100	Q	E	B	72	2	650	188	5 1/2J	800	850	**
185/60R14	STD	82	T	F	C	71	2	578	189	5 1/2J	475	**	**
185/65R14	STD	86	T	F	C	71	2	596	189	5 1/2J	530	**	**
185/70R14	STD	88	T	F	C	71	2	616	189	5 1/2J	560	**	**
175/65R15	STD	84	T	F	C	71	2	609	177	5J	500	**	**
185/55R15	STD	82	T	F	C	71	2	585	194	6J	475	**	**
185/60R15	STD	84	T	F	C	71	2	603	189	5 1/2J	500	**	**
185/65R15	STD	88	T	F	C	71	2	621	189	5 1/2J	560	**	**
195/60R15	STD	88	T	F	C	71	2	615	201	6J	560	**	**
195/65R15	STD	91	T	E	B	72	2	635	201	6J	615	**	**
195/70R15C	8PR	104/102	Q	E	B	72	2	655	201	6J	850	900	**
205/65R15	STD	94	T	E	B	72	2	647	209	6J	670	**	**
205/70R15	STD	96	T	E	B	72	2	669	209	6J	710	**	**
205/70R15C	8PR	106/104	R	E	B	72	2	669	209	6J	950	900	**
215/65R15	STD	96	T	E	B	72	2	661	221	6 1/2J	710	**	**
215/70R15	STD	98	T	E	B	72	2	683	221	6 1/2J	750	**	**
215/70R15C	8PR	109/107	R	E	B	72	2	683	221	6 1/2J	1030	975	**
225/70R15C	8PR	112/110	Q	E	B	72	2	697	228	6 1/2J	1060	1120	**
235/75R15	STD	105	S	E	B	72	2	733	235	6.5	925	**	**
195/60R16C	6PR	99/97	S	E	B	72	2	640	201	6J	775	730	**
195/65R16C	8PR	104/102	R	E	B	72	2	660	201	6J	900	850	**
195/75R16C	8PR	107/105	Q	E	B	72	2	698	196	5 1/2J	975	925	**
205/55R16	STD	91	T	E	B	72	2	632	214	6 1/2J	615	**	**
205/60R16	STD	92	T	E	B	72	2	652	209	6J	630	**	**
205/65R16	STD	95	T	E	B	72	2	672	209	6J	690	**	**
205/65R16C	8PR	107/105	Q	E	B	72	2	672	209	6J	975	925	**
205/75R16C	8PR	110/108	R	E	B	72	2	714	203	5 1/2J	1060	1000	**
215/55R16	XL	97	H	E	B	72	2	642	226	7J	730	**	**
215/60R16	STD	95	T	E	B	72	2	664	221	6 1/2J	690	**	**
215/65R16	STD	98	T	E	B	72	2	686	221	6 1/2J	750	**	**
215/65R16C	8PR	109/107	R	E	B	72	2	686	221	6 1/2J	1030	975	**
215/70R16	STD	100	S	E	B	72	2	708	221	6.5	800	**	**
215/70R16	STD	100	T	E	B	72	2	708	221	6 1/2J	800	**	**
215/75R16C	8PR	113/111	R	E	B	72	2	728	216	6J	1150	1090	**
225/60R16	STD	98	T	E	B	72	2	676	228	6 1/2J	750	**	**
225/65R16	STD	100	T	E	B	72	2	698	228	6 1/2J	800	**	**
225/65R16C	8PR	112/110	R	E	B	72	2	698	228	6 1/2J	1120	1060	**
225/70R16	STD	103	H	E	B	72	2	722	228	6.5	875	**	**
235/65R16	STD	103	T	E	B	72	2	712	240	7J	875	**	**

Special Buffer Layer

Special rubber buffer layer at the bottom of the stud absorbs the impact force of snow on the ground to prevent studs from falling into the snow.



235/65R16C	8PR	115/113	R	E	B	72	2	712	240	7J	1215	1150	**
235/70R16	STD	106	T	E	B	72	2	736	240	7	950	**	**
245/70R16	STD	107	T	E	B	72	2	750	248	7	975	**	**
245/75R16	STD	111	S	E	B	72	2	774	248	7	1090	**	**
215/50R17	STD	95	T	E	B	72	2	648	226	7J	690	**	**
215/55R17	STD	94	T	E	B	72	2	668	226	7	670	**	**
215/60R17	STD	96	H	E	B	72	2	690	221	6 1/2J	710	**	**
215/65R17	STD	99	T	E	B	72	2	712	221	6.5	775	**	**
225/45R17	XL	94	H	E	B	72	2	634	225	7 1/2J	670	**	**
225/50R17	XL	98	H	E	B	72	2	658	233	7J	750	**	**
225/55R17	STD	97	T	E	B	72	2	680	233	7	730	**	**
225/60R17	STD	99	H	E	B	72	2	702	228	6 1/2J	775	**	**
225/65R17	STD	102	T	E	B	72	2	724	228	6 1/2J	850	**	**
235/55R17	STD	99	V	E	B	72	2	690	245	7 1/2J	775	**	**
235/60R17	STD	102	H	E	B	72	2	714	240	7J	850	**	**
235/65R17	STD	104	T	E	B	72	2	738	240	7	900	**	**
245/65R17	STD	107	T	E	B	72	2	750	248	7	975	**	**
265/65R17	STD	112	T	E	B	72	2	776	272	8J	1120	**	**
265/70R17	STD	115	S	E	B	72	2	804	272	8	1215	**	**
225/40R18	XL	92	H	E	B	72	2	637	230	8J	630	**	**
225/55R18	STD	98	T	E	B	72	2	705	233	7J	750	**	**
225/60R18	STD	100	T	E	B	72	2	727	228	6 1/2J	800	**	**
235/55R18	STD	100	H	E	B	72	2	715	245	7.5	800	**	**
235/60R18	STD	103	H	E	B	72	2	739	240	7J	875	**	**
255/55R18	STD	105	V	E	B	72	2	737	265	8J	925	**	**
235/55R19	STD	101	H	E	B	72	2	741	245	7 1/2J	825	**	**
255/50R19	XL	107	H	E	B	72	2	739	265	8J	975	**	**
275/40R20	XL	106	H	E	B	72	2	728	278	9 1/2J	950	**	**
215/60R17	STD	96	T	E	B	72	2	690	221	6 1/2J	710	**	**
225/60R17	STD	99	T	E	B	72	2	702	228	6 1/2J	775	**	**
235/55R17	STD	99	H	E	B	72	2	690	245	7 1/2J	775	**	**
255/55R18	STD	105	H	E	B	72	2	737	265	8J	925	**	**
225/70R16	STD	103	S	E	B	72	2	722	228	6.5	875	**	**
235/70R16	STD	106	S	E	B	72	2	736	240	7	950	**	**
235/65R17	STD	104	S	E	B	72	2	738	240	7	900	**	**
225/65R17	STD	102	S	E	B	72	2	724	228	6 1/2J	850	**	**
245/70R16	STD	107	S	E	B	72	2	750	248	7	975	**	**
245/65R17	STD	107	S	E	B	72	2	750	248	7	975	**	**
235/55R18	STD	100	T	E	B	72	2	715	245	7.5	800	**	**
215/45R17	XL	91	T	E	B	72	2	626	213	7J	615	**	**
225/45R18	XL	95	T	E	B	72	2	659	225	7 1/2J	690	**	**
235/45R17	XL	97	T	E	B	72	2	644	236	8J	730	**	**
245/45R18	XL	100	H	E	B	72	2	677	243	8J	800	**	**
205/50R16	STD	87	T	E	B	72	2	612	214	6 1/2J	545	**	**
235/50R18	XL	101	T	E	B	72	2	693	245	7 1/2J	825	**	**
215/55R18	STD	95	T	E	B	72	2	693	226	7J	690	**	**

**Not applicable *Data to follow

The **ICE BLAZER WST1** is a studdable winter tyre designed for drivers that demand maximum traction in severe weather conditions, letting you outperform the elements, so you can get more out of your winter. Compound recipe:

- Green technology: Extensive use of environmentally friendly materials that meet European REACH requirements

- Specially formulated compound and polymer blends keep the rubber flexible for maximum performance in extreme temperatures improving safety and handling in Northern winter conditions, designated with the Severe Service Emblem
- Specially blended Silica-Reinforced Formula for excellent grip performance in low temperatures



Uniform V-shaped tread design
Improve ice and snow grip performance, avoid skidding, and can effectively reduce noise.

Optimised Sipe Direction
Ensure sipes maintain maximum grip strength when driving straight or turning to provide excellent safer driving on ice and snow.

ICE BLAZER WST2 LT



STUDDABLE WINTER TYRE - 15 SIZES



Zig-zag sipe arrangement:
Aggressive zig-zag sipes engineered for excellent directional grip on snow and ice.



Size	PR	LI	SR	RR	WG	NG Db	NG	OD (mm)	SW (mm)	Standard Rim	Max Load (Kg)		UTQG
											Single	Dual	
LT225/75R16	10PR	115/112	Q	F	C	74	3	744	223	6J	1215	1120	**
LT245/75R16	10PR	120/116	Q	F	C	74	3	774	248	7J	1380	1260	**
245/70R17	STD	110	S	E	C	72	2	776	248	7J	1060	**	**
LT245/70R17	10PR	119/116	Q	F	C	74	3	810	284	8.5J	1285	**	**
LT265/70R17	10PR	121/118	Q	F	C	74	3	804	272	8J	1450	1320	**
235/60R18	XL	107	T	E	E	73	2	739	240	7J	975	**	**
235/65R18	STD	106	T	E	E	73	2	763	240	7J	950	**	**
245/60R18	STD	105	T	E	E	73	2	751	248	7J	925	**	**
255/70R18	STD	113	S	E	E	73	2	815	260	7 1/2J	1150	**	**
265/60R18	STD	110	T	E	E	73	2	775	272	8J	1060	**	**
265/65R18	STD	114	T	E	E	73	2	801	272	8J	1180	**	**
LT265/70R18	10PR	124/121	R	E	C	74	2	829	272	8J	1600	**	**
275/65R18	STD	116	S	E	E	73	2	815	279	8J	1250	**	**
LT275/70R18	10PR	125/122	R	E	C	74	2	843	279	8J	1650	**	**
245/50R20	STD	102	T	E	E	72	2	754	253	7 1/2J	850	**	**

**Not applicable

A studdable winter tyre designed for light trucks, the **WST2 LT** allows you to tackle the toughest on- and off-road conditions with snow, ice or mud terrains while maintaining maximum traction.

- Green technology: Extensive use of environmentally friendly materials that meet European REACH requirements
- Specially formulated LT compound and polymer blends keep rubber flexible for maximum performance in extreme temperatures improving safety and handling in Northern winter conditions (designated with the Severe Service Emblem)
- Specially blended Silica-Reinforced Formula for excellent grip performance in low temperatures



Zig-zag sipe arrangement
Aggressive zig-zag sipes engineered for excellent directional grip on snow and ice.



Angled grooves
Effectively helps to evacuate slush and water to maximise grip and control.



Variable pitch sequence
Optimised to ensure a quiet and smooth ride.

THE SAILUN ENVIRONMENTALLY-FRIENDLY TECHNOLOGY (EFT) PROGRAMME

Our EFT programme demonstrates Sailun's commitment to delivering more for your investment while minimising environmental impacts. Tyres designated as EFT offer lower rolling resistance, and reduce fuel costs.

These tyres have also gained approval from the United States Environmental Protection Agency (USEPA) as part of the SmartWay® Verified Technologies scheme. This is a public / private collaboration between the USEPA and the transportation industry, helping carriers and logistics companies to improve fuel-efficiency and save money. SmartWay® Verified tyres can reduce NO_x emissions and fuel use by over 3%.



TERRAMAX
CVR EFT



Find out more about the Terramax CVR EFT SmartWay® Verified Low Rolling Resistance tyre on page 16.



Sailun is proud to announce that the Atrezzo and Ice Blazer winter line ups have been awarded the PTPA Media™ Seal of Approval for its product quality. PTPA's seal is the most publicised and highly recognised award seals in North America. Evaluated and reviewed through PTPA's testing programme that is composed of the largest volunteer parent testing community in North America, the seal signifies the exceptional quality of Sailun tyres. Independent parent volunteers evaluate products in their own homes to ensure that PTPA winners are chosen based on merit and

consumer experience – not on commercial considerations. As a result, the PTPA Media™ Seal has quickly gained recognition as an international leader in certifying consumer products for quality, effectiveness and value. With a volunteer testing community of over 40,000 parents, PTPA Media™ was rated the Most Trusted Seal by 22,000 parents. Consumers looking for high-quality products and services can rest assured when they see the PTPA Winner's Seal – it is evidence of a product's excellence from having been evaluated by unbiased parent testers.





Passenger and Light Truck Tyres

DISTRIBUTOR:



Sailun Europe

Vienna House, Birmingham International Park, Starley Way, Off Bickenhill Lane,
Solihull, West Midlands, B37 7GN, United Kingdom

Tel: +44(0)121 767 1925 | Fax: +44(0)121 767 1929 | Email: info@sailuntyre.eu

WWW.SAILUNTYRE.EU